



## MEETING Thursday 17<sup>th</sup> March 2016 at 3pm

Wiltshire Council Offices Monkton Park Chippenham SN15 1ER Committee Rooms C/D

Item	Notes	
	<b>Attending</b>	
<b>LL</b>	Lord Lansdowne (President)	
<b>FdRP</b>	Fleur de Rhé Philipe(Chairman)	
<b>RB</b>	Cllr Rolf Brindle Melksham Without Parish Council	
<b>RW</b>	Cllr Richard Wiltshire Melksham Town Council	
<b>CC</b>	Chris Coyle Wilts & Berks Canal Trust	
<b>GC</b>	Gavin Champion Cooper Tires	
<b>RBr</b>	Richard Broadhead Wiltshire Council	
<b>CG</b>	Colin Goodhind Melksham Community Area Partnership	
<b>KH</b>	Kath Hatton Wilts & Berks Canal Trust	
<b>KO</b>	Ken Oliver Wiltshire Council	
<b>CR</b>	Charlotte Riggs Swindon BC	
<b>RY</b>	Robert Yeowell British Canoeing	
<b>1</b>	<b>Apologies;</b> Paul Harris Oxfordshire CC, Alistair Millington Sustrans, Cllr Rodney Rose Oxfordshire CC, Cllr Mark Clarke CrickladeTC, Elizabeth Payne IWA/CCT, Vaughan Welch IWA ,Rob Dean KACT, Mark Evans CRT, Jason Leach CRT, Jonathan Till WBCT, Cllr Andrew Bennett Swindon BC	
<b>2</b>	<b>Notes from the last meeting 17<sup>th</sup> December 2015 (pre-circulated)</b> were approved . LL asked for clarity on the revised wording in the Strategy Document regarding land acquisition. The revised wording is now ... <b><i>The Partnership policy is to use the historic alignment of the canal where possible noting the agreed deviation to this route in Melksham Swindon Cricklade and Abingdon. Other pragmatic minor deviations will be made to accommodate technical difficulties and landowner preference. Based on this policy the Partnership seeks to acquire land by negotiation wherever possible.....</i></b>	
<b>3</b>	<b>Chairman's Announcements</b> <b>FdRP</b> noted that this would have been Cllr Andrew Bennett's last meeting but due to Mayoral duties he was unable to attend. FdRP wished to record the thanks of the Partners to Andrew for his work over a number of years as deputy Chairman and for particularly in the Eastern Villages. FdRP will write a letter of thanks. <b>CR</b> had a short message from Andrew: 'He hoped for more progress on the Swindon eastern route as there was lots of local support now. In an environment where there was a continuing shortage of funds he wished the project success and sent thanks to all who he had worked with'.	<b>FdRP</b>
<b>4</b>	<b>Projects update</b> <b>Melksham Link KO</b> reported that the Environment Statement and other	

revised documents had been submitted to Wiltshire Council and that the process to determine the planning application could now start again . The planning ref is W/12/01080/FUL. The new documents will be uploaded soon. The Environment Statement is available on the Partnership web site <http://www.wiltsandberkscanal.org.uk/index.php/projects/melksham-link> . A new consultation period will again start and it is hoped to get to a planning committee before the summer ( subject to responses)

**LL** noted it would be helpful to see the plans particularly relating to the proposed housing. **KO** said that this application (Planning application W/12/01080/FUL) only dealt with canal ( and river) corridor. The external Masterplanning team were still revising the scheme and WBCT would make available these plans when they were finalised.**CC** confirmed that the Masterplan would be submitted as a separate outline planning application.

**FdRP** noted that when the application came to a committee it would be helpful if there were 3 supporters to speak. **KO** said that when the information was available on the planning web site the details would be circulated to partners so they could add (supportive) comments. **FdRP** suggested that local Members are contacted and it is made clear that this application is about the canal not the enabling development. **KO** said previously that most contact had been via the Area Board. **CC** thought that there should be clarity between the canal application and the enabling development in agenda items. **KO** said that it would probably be best if WBCT tabled the enabling development plans when they were at a stage where they could be discussed. **FdRP** asked if an overall plan could be circulated for the canal scheme. **KO** will circulate this with the notes. **RB** noted that the enabling development plans had been shown to the Parish Council. **KO** said that these plans are likely to be changed before a planning application is submitted.**CG** thought it was important that any potential housing issues should not obstruct the canal planning application. **RW** said that the canal was being included in one of the schemes at Chippenham and hoped that the two schemes might be mutually supportive.

#### **Pewsham Locks**

**KH** reported that Canal & River Trust had been successful in obtaining a £500k grant from Peoples Postcode Lottery. It was not yet generally known that the Wilts & Berks Pewsham Locks projects is one of the beneficiaries of this funding (Dreamfund) . An official launch is expected in late April/early May. This CRT lead initiative is partnered by Help for Heroes and the W&B is one of six original schemes in the bid ( which was for £1m). PPL decided to award the lower amount as there were two equally deserving applications. The reduced funding has meant the withdrawal of 2 schemes and a slight reduction in the funding available for Pewsham which is now just short of £100k.Wiltshire Council's Chippenham Area Board has made a grant of £20k to make up the shortfall. The project is reconstruction of top lock at Pewsham. Tidworth Help for Heroes will be making their contribution to the project in spring 2017.

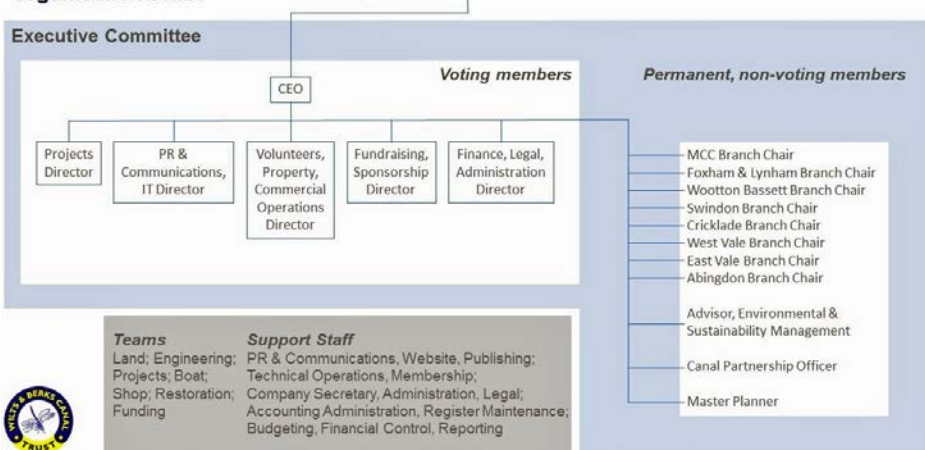
A further separate bid to Heritage Lottery Fund for approximately £700k will be made in June this year for the remainder of the site ( excluding Top Lock Cottage). **FdRP** thanked Kath for the hard work and successful outcome . **KO** noted that this is the first time that Canal & River Trust have got directly involved with a funding bid for an externally led restoration. This reflects CRT current thinking about how they are dealing with specific

**KO**

**KO**

	<p>restoration projects and recognising that the Wilts &amp; Berks and Cotswold restorations will create a new southern waterways network centred on Swindon. Major schemes like this are likely to be recognised as being of national significance and supported appropriately. The Help for Heroes connection to help re-skill injured service personnel is also of great significance and we hope will lead to other similar collaborations.</p> <p><b>Studley Grange</b></p> <p><b>CC</b> reported that after pausing for winter, the restoration will be restarted when ground conditions are suitable for the contractors to return to work. The first work will be the towpath surfacing to allow volunteers access to carry out the extensive planting programme for the wildlife trail. <b>KH</b> showed examples of the interpretation boards that had been created using local colleges and schools- this work has been carried out by the project officer Kate Jones. The planting work will be done in association the Wiltshire Wildlife Trust.</p> <p>To complete the excavation works the water level will need to be slowly reduced over a number of weeks. The next phase of the scheme subject to further funding will be building Bincknoll Lane bridge to allow the Studley Grange section to be linked to Morningside Farm. WBCT now regards linking Royal Wootton Bassett to Swindon as high priority.</p> <p><b>Swindon Wichelstowe</b></p> <p><b>KO</b> reported that any progress still depended on a formal signing for the Joint Venture Company between Swindon BC and Barrett Homes. When this had taken place discussions will start on the proposed Wichelstowe Link to join the canal at Westleaze. It is also hoped that some work can be carried out on the water supply to the canal at East Wichel . It is also hoped to start meaningful discussion about co-siting of the road and canal crossing for M4 .</p> <p><b>LL</b> asked if a replacement for Cllr Bennett had been identified as a Partnership representative. <b>CR</b> said that this would not be decided until after the May election.</p> <p><b>Swindon Central</b></p> <p>A meeting was held with Leader of the Council and Cabinet Member for Regeneration, senior officers and WBCT . It has been proposed that a cooperation agreement may be a way forward. The terms will need to be carefully worded and a draft has been sent for Swindon BC to consider.</p> <p><b>Swindon New Eastern Villages</b></p> <p><b>KO</b> Outlined some technical proposals that are being suggested to use the canal in the New Eastern Villages for land drainage and flood prevention The full technical report is available on the Partnership web site .  <a href="http://www.canalpartnership.org.uk/files/Flood/WBCTNEV.pdf">http://www.canalpartnership.org.uk/files/Flood/WBCTNEV.pdf</a></p> <p><b>Abingdon</b> (new proposal- outline of scheme at the end of these notes )  Nearly ten years ago Jubilee Junction was constructed and the is now a possibility of a funding for a scheme to extend this further westward. An initial proposal has been discussed with IWA which would extend the canal by approx 1km. <b>KH</b> was keen to make a start even if it was limited to connecting to the lake. <b>KO</b> also noted that a submission had been made to EA consultation on the Oxford &amp; Abingdon Flood relief proposals.  <a href="http://www.canalpartnership.org.uk/files/Flood/AbingdonFlood.pdf">http://www.canalpartnership.org.uk/files/Flood/AbingdonFlood.pdf</a></p>	
5	<p><b>Wilts &amp; Berks Canal Trust –restructure</b></p> <p><b>CC</b> reported that the reorganisation had now been completed :</p>	

### Executive Committee Organisation Chart



Pen pictures of the WBCT Executive are included at the end of these notes. New support teams are currently being appointed. There is an interim Board of Trustees but in the next few months there will be invitations to a number of organisations including the Partnership to nominate someone to act as a Trustee.

6

### VWHDC Local Plan Enquiry

**KO** noted that (not directly related to this item) there were public discussions about local government reorganisation in Oxfordshire . A number of proposals were being considered to create a Unitary Authority **KO** had attended the EIP on 17<sup>th</sup> February. The objective was to persuade the Inspector that the original Canal Policy was restored to Pt 1 of the Local Plan. Amongst the points raised were the duty to co-operate with the other Local Authorities and that VWHDC should not over-weight the views of 4 landowners ( who had originally objected to the policy) compared to the needs of green infrastructure for all of the community. Further technical information is to be submitted by VWHDC to the Inspector by 29<sup>th</sup> April after which he will be producing an interim report. **KO** noted that the majority of interest in the Local Plan is about housing and therefore the canal issue is only a very small part of the document.

**LL** noted that LA support was vital to the delivery of the scheme.

**RW** asked if the Thames Water reservoir plan was still relevant. **KO** said that it was still being proposed as a possibility but did not feature in any management plan until at least 2030. **LL** wondered if the housing shortage in Oxfordshire might be able to produce enabling development. **KO** said that there has been a meeting with the Leader of the Council and Head of Planning to discuss this but they had indicated that there was a considerable demand for funding for transport infrastructure which would be competing with any canal funding.

7

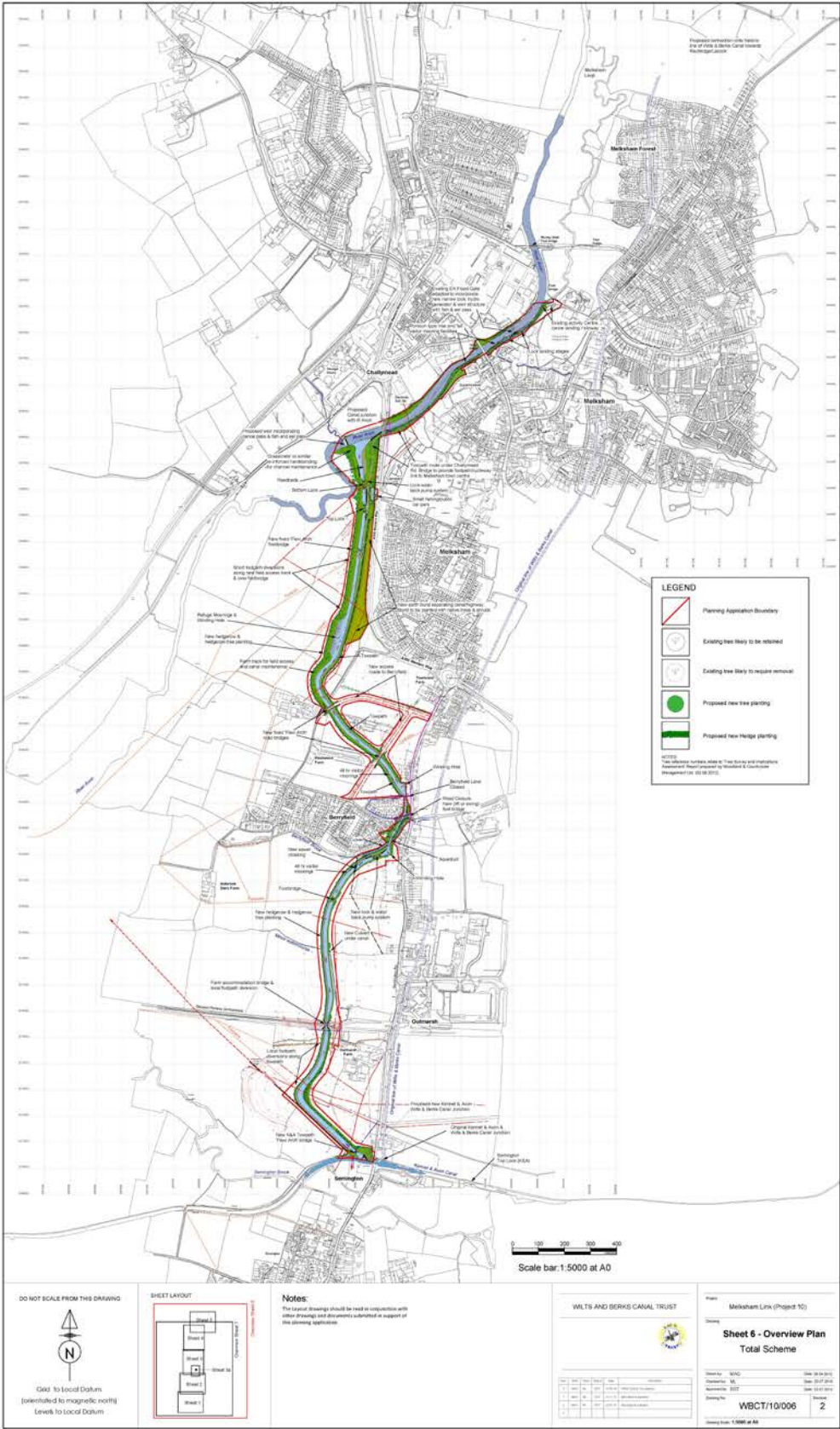
### Partners Reports

**KO** presented some further ideas about how the canal water storage might be used to provide attenuation on some of the watercourses that flowed from the Downs. The proposal had not been fully engineered and was currently being discussed with Environment Agency. **LL** noted the extra demand on land if this were implemented. **RB** said that this was obviously at a very early stage of design and much more work would be required to define the scale of the storage.

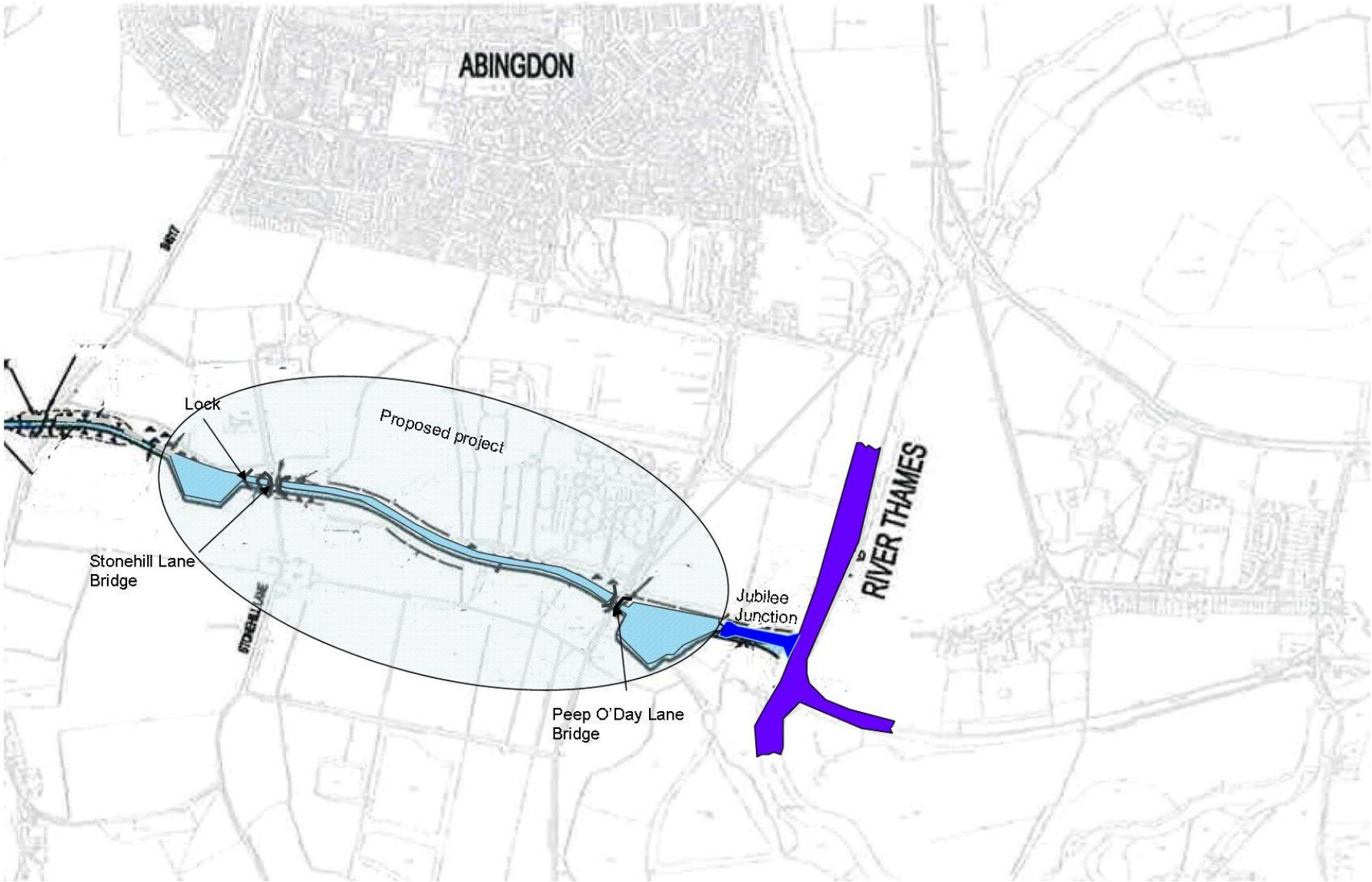
	<p><b>KH</b> informed partners that a new funding appeal was about to be launched to purchase a section of the canal (approx 850m) between Melksham and Lacock at Queenfield Farm. Ground investigation survey has been carried out to determine the nature of the canal infill. <b>RB</b> noted the enthusiasm of Melksham Without PC for this corridor as a route to Lacock.</p> <p><b>RY</b> would like to encourage use of the Studley Grange section of canal when completed for canoeing. It was agreed it was desirable for all areas of restored canal to be used for this purpose and RY would look at refreshing canoeing guides in conjunction with CC</p> <p><b>GC</b> noted that Cooper Tires are still seeking ways to move out of their site adjacent to the river.</p> <p><b>RB</b> asked if the proposed bridge at Bincknoll Lane RWB was a restoration or new construction. <b>CC</b> said that it was intended to be a new 'Flexiarch' construction.</p> <p><b>CG</b> Melksham Food &amp; River Festival will be taking place on September 4<sup>th</sup> <a href="http://www.melkshamtown.co.uk/news/20-melksham-food-and-river-festival-5-and-6-september-2015">http://www.melkshamtown.co.uk/news/20-melksham-food-and-river-festival-5-and-6-september-2015</a></p> <p><b>CC</b> noted that WBCT had just authorised an environmental study of the canal route in Oxfordshire. Peter Brett Associates have been appointed as consultants.</p> <p><b>RY</b> noted that the North Wilts branch was not discussed much, It was agreed to put it as an agenda item for the next meeting together with plans for Chippenham – it was noted that these plans would not be circulated but shown to partners as indicative schemes.</p> <p>Meeting Closed at 16.25</p>	<p><b>CC RY</b></p> <p><b>KO</b></p>
9	<p><b>Date and time and location of next meeting :</b></p> <p><b>Proposed Dates for 2016</b></p> <p>16<sup>th</sup> June:15<sup>th</sup> September(possible site visit):15<sup>th</sup> December</p>	



Item 4 Melksham Link Plans



Item 4 Abingdon Proposal



**Sheila J. Wade MA Oxon**  
**PR & Communications, IT Director**

After graduating in the late 70's from St Hugh's College Oxford, I went into industry initially in the manufacturing sector and then in the information sector, where I held a variety of roles in multinational corporations in HR and Communication.

I started my own service company in the 90's which is still working today in the environment management sector. I have been MD and FD for Greenscape Services Ltd, and am now on the last stage of my exit strategy, as a nonexecutive director.

I have also lectured, trained and facilitated in Management and Communication, mainly working with young people. I have, for the last 20 years, been committed to voluntary work, both in my community and nationally, and I continue to work at Trustee and Director level for a number of Charities and voluntary organisations.

In 2013 Andrew Chapman, the then Chair of Foxham & Lyneham Branch, recruited Greenscape as a corporate member of the Wilts & Berks Canal Trust in order to have our professional environment management skills available to the Branch and the Trust on a pro bono basis. In 2015, I became the Foxham & Lyneham Branch Secretary and will continue to work with Ian Gilbert Foxham & Lyneham Branch Chair, and other Branch Officers, to ensure the branch remains an effective part of the Trust.

I am delighted to join the Executive at this exciting time in the Trust's development, and I look forward to working with the other Directors in order to support and achieve the aims of the Trust.





**Derek Flexer C.Eng. MIET**

**Volunteers, Property, Commercial Operations Director**

I have had a varied career starting as an Engineering Cadet in the Merchant Navy. I then moved on and had jobs ranging from Software Engineering, through Project and Programme Management, and Product Management through to Compliance Management.

I am currently a Programme Manager with TMForum, a telecom industry body.

I have lived in Chippenham since 1996, with my family and have been on many family canal boat holidays round most of the popular cruising rings of the Midlands and further North.

I have been an active volunteer in the Chippenham area since 2000 and have been with the Wilts & Berks Canal Trust since March 2011.

I was elected Chair of the MCC Branch in June 2012 where I remained for three years. Since then I have been Maintenance Director and Health & Safety Officer.

I was recently appointed as Volunteers, Property, Commercial Operations Director and Health & Safety Officer.

I believe I have joined at an exciting time for the Trust and that we are about to see dramatic changes in the scale of our operation to address the major planning and civil engineering projects.



**Andrew Matters**  
**Projects Director**

After an apprenticeship with Rolls Royce I spent 28 years in the Royal Navy, serving in the Cold War and the Falklands, the Persian Gulf and the Adriatic conflicts. Highlights included the role as Squadron Marine Engineer Officer for six Destroyers; leader of a team to introduce the novel concept of Reliability Centred Maintenance (RCM) and finally in a role charged with ensuring that new maritime procurement projects are supportable.

I joined BAE Systems in 2002 on the Type 45 Destroyer Support team to define the services and processes needed for the waterfront maintenance and servicing of these six ships. I moved to the Queen Elizabeth class Aircraft Carrier Support team in 2009 and now hold the authority to ensure that all the maintenance instructions, technical manuals, training packages, spare parts and stores for this £6 billion project are fit for purpose and safe to use.

I am a Chartered Engineer and Fellow of the Institution of Mechanical Engineers where I am chair of their Ethics Working Group, in which role I have just rewritten the Code of Conduct.

For the last 18 months I have served on the Wilts & Berks Canal Trust Engineering Committee and as a member of MCC branch. I have led groups of up to 350 people while knowing exactly what their jobs involve. My project management experience comes from the RCM team experience and my employment within BAE Systems, during which I undertook formal training.

In my role on the Executive I look forward to directing major restoration projects in liaison with Branch Chair and individual Project Managers, while making best use of support from the Engineering and Land Teams.



**Chris Coyle****Finance, Legal, Administration Director**

Although I lived in Hertfordshire at the time, a business visit in 1987 to Wantage led me to spot by chance the profile of a dry canal in the car park of the factory I was visiting. This led me to join the Wilts & Berks Canal Amenity Group (as it was then). Over the next few years I worked on the canal, on the WRG Big Dig, and at other sites, mainly at Foxham and Royal Wootton Bassett.

A Chartered Accountant by training, I have been Finance Director of a number of companies. My work gave me little time for the canal, but it did give me a lot of experience in company administration, and in helping businesses of all sizes and types with a large range of problems to solve.

In 2001 I moved to Bath. In 2008 I decided to retire (mostly) and to take a more active role in the canal restoration. I was very pleased to be asked to take on the role of Company Secretary following the AGM in 2008.

Since that time I have been looking after the legal aspects of the Trust, such as arranging insurance cover and making the legally required returns of the company, and also have made a wider contribution, at one time editing Dragonfly and taking a part in developing the wider strategy and its implementation. Recently I have been helping with the proposals for the reorganisation of the Trust.

Joining the Executive as Director of Finance and Administration I look forward to strengthening the Trust's financial position and building the strength of the administration, in addition to retaining the separate role of Company Secretary.



**Kath Hatton****Fundraising, Sponsorship Director**

When I first became aware of the Wilts & Berks Canal restoration in 1993, it was instantly appealing as I wanted to join something that was at an early stage where I could make a difference. As a new member I went to the AGM that year, but nobody spoke to me. So I was a little disheartened and just became an armchair member for a few years. In 2000 I retired from the Civil Service and moved to France for 8 years and was even more out of reach, but keeping up with progress by reading Dragonfly.

I have been a boater for many years, first hiring, then having a share in a narrowboat for 14 years. We moved the boat regularly and so I have seen many different canals. When I finally moved into Wiltshire in 2008, I was at last close enough to attend local MCC meetings where Colin Fletcher encouraged me to try fundraising. I really enjoyed it and we managed to raise enough to dredge a good length of canal at Pewsham and restore the horseshoe spillweir. I became Fundraising Director for the Trust in 2010.

The last few years of running without a Chairman meant that as Vice-Chairman I had many extra duties and responsibilities, and fundraising activity suffered as a consequence. The Trust is moving into a new exciting phase now and I am really looking forward to my new post on the Executive. I have many ideas and hope at last I will be able to “make that difference”!





**Jonathan Till MA Cantab**  
**Chief Executive Officer**

After graduating in the early 80's from Corpus Christi College Cambridge, I joined the banking industry learning the ropes at Barclays Bank International PLC.

My career later took me to Ernst & Young as a consultant in Financial Services doing organisational and financial modelling work mainly for the banking industry. But it was not long before I was once again employed by the industry, firstly at National Westminster Bank PLC and then – thanks to Ernst & Young – at Budapest Bank Zrt in Hungary with the job of supporting the organisation prepare for privatisation – as it turned out by GE Capital.

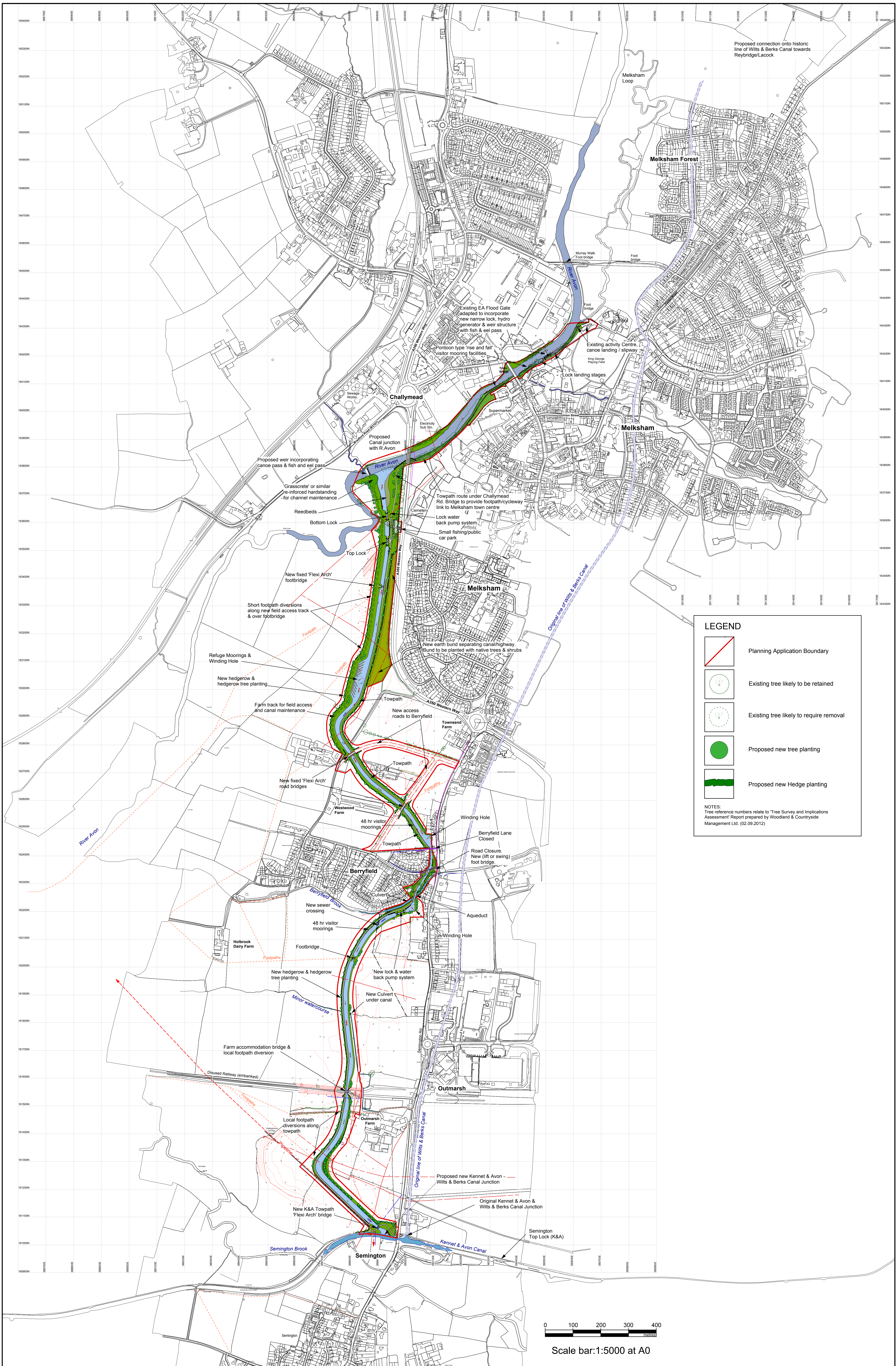
After 10 years here I moved on to the Austrian Erste Bank's Hungarian subsidiary where I spent a further 10 years at a bank – eventually being appointed to the Board of Directors.

For the last 5 years I have worked outside the banking industry in both the UK and in Hungary, and I have at last had the chance to pick and choose what challenges I take on. One such challenge has been to modernise the organisation of the Wilts & Berks Canal Trust. If we get it right (which we will), then the target of making substantial progress on getting the canal restored over the next 10 to 15 years will be a reality.

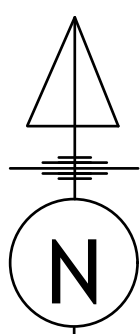
I'm very proud to be working with my fellow Directors on the Executive – with Andrew, Chris, Derek, Kath and Sheila – and excited about moving on to deal with the challenges ahead of us. With the continuing support of our members and with the new organisation coming into place I have no doubt that the pace of our progress will quicken!





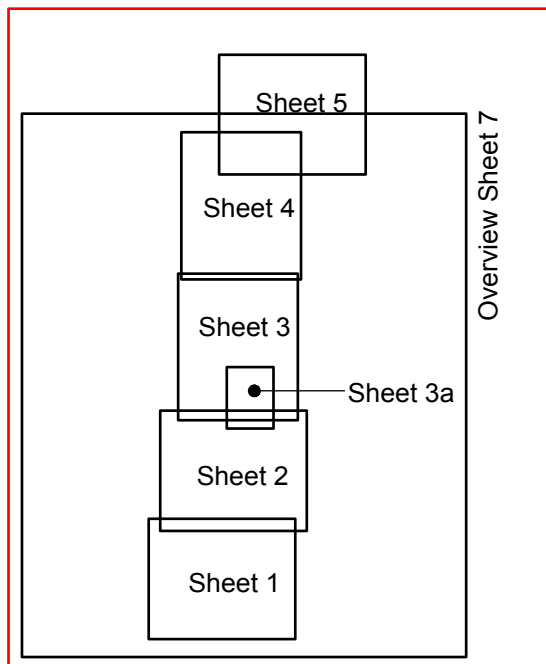


DO NOT SCALE FROM THIS DRAWING



Grid to Local Datum  
(orientated to magnetic north)  
Levels to Local Datum

#### SHEET LAYOUT



Overview Sheet 6

#### Notes:

The Layout drawings should be read in conjunction with other drawings and documents submitted in support of this planning application.

#### WILTS AND BERKS CANAL TRUST



Rev	Drawn	Checked	Approved	Date	Description
1	MAG	ML	EGT	01.06.12	FIRST ISSUE / PLANNING
2	MAG	ML	EGT	14.11.13	REVISED PLANNING
3	MAG	ML	EGT	22.07.15	REVISED PLANNING

Project  
Melksham Link (Project 10)

#### Sheet 6 - Overview Plan Total Scheme

Drawn by: MAG  
Checked by: ML  
Approved by: EGT  
Drawing No: WBCT/10/006  
Drawing Scale: 1:5000 at A0

Date: 28.04.2012  
Date: 22.07.2015  
Date: 22.07.2015  
Revision: 2





## MEETING Thursday 29<sup>th</sup> September 2016 at 3pm

Wiltshire Council Offices Monkton Park Chippenham SN15 1ER Committee Rooms A/B

Item	Notes	
<b>LL</b> <b>RW</b> <b>RBI</b> <b>RBr</b> <b>RD</b> <b>KH</b> <b>KO</b> <b>JW</b> <b>RY</b>	<b>Attending</b> Lord Lansdowne (President) Cllr Richard Wiltshire Melksham Town Council Roderick Bluh Wilts & Berks Canal Trust Richard Broadhead Wiltshire Council Rob Dean Kennet & Avon Canal Trust (Chairing the meeting) Kath Hatton Wilts & Berks Canal Trust Ken Oliver Wiltshire Council Jonathan Wilshaw Swindon Borough Council Rob Yeowell British Canoeing	
1	<b>Apologies;</b> Cllr Fleur de Rhé Philipe Wiltshire Council, Colin Goodhind Melksham Community Area Partnership Cllr Rolf Brindle Melksham Without Parish Council, Cllr David Nimmo- Smith, Mark Evans CRT, Jason Leach CRT, Gavin Champion Cooper Tires, Lesley Tait Thames Water, Colin Goodhind MCAP, Cllr Mark Clark Cricklade TC, Kevin East British Canoeing; James Blockley OCC.	
2	<b>Notes from the last meeting 16<sup>th</sup> June 2016 (pre-circulated) were agreed</b>	
3	<b>Chairman's Announcements</b> <b>Membership changes:</b> Oxfordshire CC now being represented by Cllr David Nimmo- Smith ( replacing Cllr Rodney Rose)- he is unable to attend this time . Elizabeth (Liz) Pain (IWA/CCT) has resigned as she is moving to Devon Alistair Millington has a new role at Sustrans – contact now is Nick Farthing  <b>Wilts &amp; Berks Canal Fatality at Pewsham Locks</b> WBCT had issued the following statement: The Trust is extremely sad to inform members that there was a fatal accident at the Pewsham site on Wednesday 24 August. The Trust sends its deepest condolences to the family and friends of our volunteer who tragically lost his life. The Trust also would like to express our thanks to the emergency services who responded so promptly and who took such great care of all of our volunteers at the scene. WBCT is cooperating fully with the ongoing Health and Safety Executive investigation. All enquiries should be directed to Sheila Wade on 07976 281586 or sheila.wade@wbct.org.uk	

**Projects update** – a short summary had been pre-circulated and is also at the end of these notes.

**KO** outlined current issues in trying to deal with Environment Agency where charges were now being levied for technical meetings. Robert Buckland MP (South Swindon) had set up a meeting earlier in the day and it was hoped that by talking to the newly appointed EA Catchment Coordinators it would be possible for community based projects to continue to discuss technical matters without charge. (Especially as EA are project partners and the restored canal is generally able to deliver their aims and objectives). A further issue was raised at the meeting, particularly in the planning context of Swindon's New Eastern Villages, where it would appear that no one organisation is coordinating fluvial flooding (EA responsibility) and surface water flooding (Local Authority responsibility). WBCT engineering team have made a comprehensive proposal to use the canal as part of the drainage solution for NEV. This WBCT report needs to be technically assessed and if viable and effective the new canal should be made part of the NEV infrastructure requirements. **RBI** said he hoped that Robert Buckland would facilitate a meeting with the Minister responsible for flood issues. **RY** asked if Network Rail were involved in any way. **KO** said that the railway embankment was part of the problem and the WBCT solution would involve a new culvert to allow more water to flow to the north of the railway line. **RW** wondered if there was any way WBCT could cross-charge EA for technical design. **RD** thought that the planning system seemed to be flawed where developers did not have to account for the 'big picture'.

**KH** reported that the HLF bid had been unsuccessful this time for Pewsham Locks but based on the comments sent to the team, a review would be held to assess how the application could be suitably modified for resubmission.

**KH** also reported that work on the Peterborough Arms was progressing slowly but the community room was going to be available for hire shortly. Volunteers were working on other parts of the building. A bid had been submitted to the current Leader funding programme to refurbish the letting rooms (as part of the Rural Tourism development programme). The timescale for the Leader programme had been shortened following the Brexit decision.

**KO/RBI** reported on Studley Grange that a further decision would be made the following day regarding the cost of completion. [**Post meeting note** the contractors were scheduled to start work on excavations week commencing Oct 10<sup>th</sup>]

The completion of the towpath would now allow planting for the wildlife trail to go ahead (now scheduled for next spring in conjunction with Wiltshire Wildlife Trust). **KH** noted that Big Lottery Fund (People's Millions) had been very supportive with extending funding deadlines to cope with the project delays.

**JW** said he was working with the NEV team on the Green Infrastructure plan and that the canal route seemed to be gaining more importance for issues like walking/cycling to school routes. The proposed plan would be going out to public consultation soon. **RD** said there was plenty of evidence from the K&A in places like Bath on the importance of this issue.

**RY** asked if there was any progress on Wichelstowe. **RBI** said that work on the District Centre had been authorised but everything else awaited the



	conclusion of the joint venture agreement. <b>RY</b> said the local community would be pleased if this work included the long awaited footbridge adjacent to Waitrose.	
5	<b>Wilts &amp; Berks Canal Trust</b> <b>RD</b> asked how the new management structure was working out. <b>KH/RBI</b> said that in general it was working well in terms of the Executive. Some more work is now required to enhance the Trustee Board. The team still requires more people to ease the workload on the Executive members.	
6	<b>VWHDC Local Plan Enquiry</b> There has been little progress since the last meeting. It seemed likely that the Inspector was not going to change the canal route protection provisions in Part 1 of the Plan and therefore WBCT would have to provide further evidence during the Part 2 process <a href="http://www.whitehorsedc.gov.uk/services-and-advice/planning-and-building/planning-policy/new-local-plan-2031/vale-white-horse-local">http://www.whitehorsedc.gov.uk/services-and-advice/planning-and-building/planning-policy/new-local-plan-2031/vale-white-horse-local</a>	
7	<b>Towpath Festival 2017.</b> WBCT intend to hold a festival in the Autumn of 2017- probably the first weekend of September. Rather than as previously an 'end to end' walk key sites were being identified to initiate local walks. Sheila Wade (Communications Director from WBCT) to be invited to the next meeting to give more details. Sheila has spoken to James Blockley OCC who is keen to help if possible with the plans. <b>RBr</b> said the Wiltshire team would be able to be involved when more details are known and that he had worked with James in his previous role as Cotswolds National Trails officer. <b>RD</b> asked how much of the towpath was currently available and accessible. <b>KO</b> estimated about 50%. <b>KH</b> reported that the 'Destination Lacock' funding appeal had now reached about £50k.	<b>KO</b>
8	<b>Review of the Partnership-</b> <b>RD</b> asked Partner organisations and representatives to think how the Partnership might be more effective in helping the Wilts & Berks Canal Trust to deliver the project. <b>KO</b> said that in looking at other successful restorations the role of the relevant Partnership (and usually a lead Partner Organisation) had been crucial. It would seem timely to ask those who had 'signed up' to the Partnership to review if they could help further with the delivery of the scheme. <b>KO</b> suggested that ideally each organisation would have a 'Champion' for the project who would need to proactively promote the Wilts & Berks. <b>LL</b> asked which organisations actually financially contributed to the Partnership <b>KO</b> said that Swindon BC currently contribute £5k and WBCT £6k. All other costs of the post are supported by Wiltshire Council. <b>RBr</b> noted that in the current and future financial climate it is unlikely that this situation is sustainable. <b>RBI</b> said that the biggest challenge appeared to be to convince others that this project can be achieved. Identifying and promoting the benefits was likely to be a major part of what WBCT had to achieve. <b>RBr</b> said that all other partnerships he worked with are facing the same challenges. <b>RY</b> said British Canoeing were able to contribute to capital works schemes like the lock landing stages on the Cotswold Canals. <b>RBr</b> said the real challenge is 'core funding' without which there can be no	<b>All</b>

	<p>officers to make capital projects happen.</p> <p><b>LL</b> said that the importance of the Partnership is to gain the belief, and therefore support, of organisations other than the Canal Trust</p> <p><b>RD</b> said he thought there should be a wider circle of people involved from Partner organisations.</p> <p><b>RW</b> asked if Semington and other Parish Councils could be asked to join the Partnership</p> <p><b>KO</b> suggested English Heritage and the National Trust might also be approached.</p> <p><b>RD</b> suggested that the role of the Partnership and the WBCT Trustee Board needed to be considered and requested that Partners consider how to take this forward at the next meeting in December.</p> <p><b>RBI</b> noted that the LEP would be a useful addition.</p> <p><b>RBL and KH</b> emphasised that control of the route was the crucial issue to solve.</p> <p><b>LL</b> thought it would be useful for Partners to be able to see the route and the current status of landownership/restoration.</p>	
9	<p><b>Partners Reports and Issues</b></p> <p><b>RW</b> asked if WBCT could more actively support the Melksham Neighbourhood Plan.</p> <p><b>RW</b> noted the Melksham Food &amp; River Festival had been very successful.</p> <p><b>RY</b> asked if WBCT were considering how to issue boat licences. <b>RBI</b> said it would be looked at where WBCT had control of the waterway.</p> <p><b>KO</b> noted that as part of the ongoing publicity campaign audio trails and information boards were being developed for a number of sites.</p> <p>This is an example of the audio information about the history of the canal:  <a href="http://bit.ly/2dhNREW">http://bit.ly/2dhNREW</a></p> <p><b>JW</b> said that SBC are in negotiation to buy a section of land at Pack Hill which contains the canal route.</p> <p><b>KO</b> thanked Rob for chairing the meeting</p>	RBI
10	<p><b>Date and time and location of next meeting</b> : 15<sup>th</sup> December 3pm at Monkton Park</p> <p><b>Proposed Dates for 2017</b> :</p> <p>16<sup>th</sup> March;15<sup>th</sup> June;21<sup>st</sup> September;21<sup>st</sup> December</p>	



### Project Summary June to September 2016

<b><u>Melksham Link</u></b> -Canal Planning application	A number of responses received from consultees ( some more supportive than others!) Engaging with EA continues to be a problem
<b><u>Pewsham Locks Project</u></b>	Project work suspended 'Help for Heroes' team scheduled for spring 2017
<b><u>Dauntsey Lock Visitor Centre project</u></b> (Peterborough Arms )	Work progressing – community room has just been used for first time by external
<b><u>Royal Wootton Bassett Studley Grange Project</u></b>	Following contract issues a new company has been appointed to complete the works. Towpath has been completed - other excavation works scheduled for October
<b><u>Royal Wootton Bassett Depot site</u></b>	Work continuing on discharge of planning conditions under -
<b><u>Swindon Mouldon Hill</u></b>	No further progress
<b><u>Swindon Wichelstowe</u></b>	-Wichelstowe Link plans on hold awaiting final signing with Swindon BC joint venture partner Barrett (David Wilson) homes
<b><u>Swindon Town Centre</u></b>	Awaiting co-operation agreement from SBC
<b><u>Swindon Eastern Villages</u></b>	Submissions made to SBC consultations on land drainage
<b><u>Land Acquisition</u></b>	Programme being agreed with Wiltshire Council for transfer of land at four locations

## Towpath - Studley Grange







## MEETING Thursday 15<sup>th</sup> December 2016 at 3pm

Wiltshire Council Offices Monkton Park Chippenham SN15 1ER Committee Rooms C/D

Item	<u>Notes</u>	
<b>LL</b> <b>FdRP</b> <b>WCr</b> <b>RBI</b> <b>RBr</b> <b>KH</b> <b>KO</b> <b>CR</b> <b>SW</b> <b>RY</b>	<p style="text-align: center;"><b>Attending</b></p> <p>Lord Lansdowne (Partnership President)</p> <p>Fleur de Rhe Philipe Wiltshire Council (Partnership Chairman)</p> <p>Cllr Wayne Crabbe Swindon Borough Council</p> <p>Roderick Bluh Wilts &amp; Berks Canal Trust</p> <p>Richard Broadhead Wiltshire Council</p> <p>Kath Hatton Wilts &amp; Berks Canal Trust</p> <p>Ken Oliver Wiltshire Council</p> <p>Charlotte Riggs Swindon Borough Council</p> <p>Sheila Wade Wilts &amp; Berks Canal Trust</p> <p>Rob Yeowell British Canoeing</p>	
1	<b>Apologies;</b> Cllr Richard Wiltshire Melksham Town Council, Rob Dean KA Canal Trust, Cllr Mark Clarke Cricklade Town Council Mark Evans CRT Jason Leach CRT Colin Goodhind MCAP, James Blockley OCC	
2	<b>Notes from the last meeting 29<sup>th</sup> September 2016 (pre-circulated) were approved</b>	
3	<p><b>Chairman's Announcements</b></p> <p>Membership: Further update from Sustrans – a new area manager to be appointed soon . In the meantime we are communicating with James Cleeton</p> <p>Cricklade Neighbourhood Plan:</p> <p>Cllr Mark Clark has asked that Partners are made aware of the current consultation on their proposed Neighbourhood Plan. These are the relevant sections:</p> <p>4.4.11 The Wiltshire, Swindon and Oxfordshire Canal Partnership, in conjunction with a number of partners, is working on a project to restore the Wilts &amp; Berks Canal and the North Wiltshire Canal which links to The Thames &amp; Severn Canal at Latton just north of Cricklade. This is the largest canal project currently underway in the UK and will take many years to complete. The work is programmed to be carried out in stages, each of which will require significant funding.</p> <p>4.4.12 The original route of the canal through Cricklade has been built upon and it is therefore not possible to restore it. An alternative route has been identified to the east of the town and this is detailed in the Wiltshire Core Strategy. For this reason this alternative route has a degree of protection from other forms of development. The National Planning Policy Framework will require a Flood Risk Assessment to be carried out as development proposals are put forwards.</p> <p>4.4.13 Experience elsewhere shows that bringing the canal back to Cricklade would undoubtedly produce an economic benefit in terms of tourism spending from boat users and other visitors.</p> <p>Policy LAF6: Cricklade Canal The development of the canal in Cricklade should include tourism and leisure uses. Pedestrian and cycle connectivity to the town centre should be a priority to ensure the economic benefits are retained in the town.</p>	

	<p>He further added that there should not be many concerns about the Cricklade NP because of the 'protection' that the canal already have from the Wiltshire Council Core Strategy. From the Cricklade Town Council point of view we thought we should not ignore the canal (or railway for that matter) when writing the draft plan. Partners are invited to comment until 6<sup>th</sup> January at <a href="http://crickladenp.org.uk/">http://crickladenp.org.uk/</a></p>	
4	<p><b>Projects update</b> – a short summary pre-circulated and is reproduced at the end of these notes. <b>KO</b> noted the progress with consultees for the Melksham Link planning application. <b>KO</b> also noted that at Studley Grange Royal Wootton Bassett the works were now complete for this year and the two sections of canal had now been connected (see image on the update report). Further work including an extensive planting programme would take place in spring 2017 with an official opening in the summer- date to be confirmed. <b>KH</b> noted successful sign off of the end of project report from Big Lottery Fund. <b>KO</b> also noted that when the towpath was opened it was hoped to connect the 'dead end' via a permissive path over the Biffa landfill site – initial discussions were taking place to see how this could be achieved.</p> <p>KO also noted a lease negotiation has been concluded on a new section of canal in the Challow area (Oxfordshire).</p>	
5	<p><b>Wilts &amp; Berks Canal Trust</b></p> <p><b>Towpath Festival 2017</b> Sheila Wade Director of Communications WBCT made a presentation showing how the Trust hoped to increase its membership over the next few years (the presentation is circulated separately). The main focus for the membership drive will be a Towpath Festival on 2/3 September 2017. There will be several different locations for events with provisional locations at Melksham, Calne, Dauntsey, Royal Wootton Bassett, Swindon, Wantage and Abingdon. The aim is to attract 10000 people to the events and to recruit 2500 members. The main aim of this campaign was to increase awareness of the Trust, to recruit more volunteers, and to raise more core funding. <b>LL</b> asked about the fee structure and what you would get as a member. <b>SW</b> said the basic fee was £10 and the real benefit was showing active support for the project (+ quarterly Dragonfly magazine) There was a general discussion about the merits and disadvantages of different fee structures.</p>	
6	<p><b>Vale of White Horse District Council Local Plan</b></p> <p><b>KO</b> reported that Pt 1 is now approved by the full Council– a considerable amount of work will be required in the early part of 2017 for Pt 2 for protection of canal route.</p>	
7	<p><b>Review of the Partnership-</b> further discussion on how the Partnership could be more effective.</p> <p>Rob Dean (KACT) had sent the following comments:</p> <p><u>Why we're involved?</u> We've seen the success of canal restoration and reckon that the restored Wilts &amp; Berks would be every bit as successful. More than that, we think the synergy of a southern circular route would become one of the great canal journeys and be beneficial for both waterways.</p> <p><u>What we're offering?</u> The K&amp;A was restored through a series of partnerships. Of great importance was that with local government. Life is tricky for LAs right now and more than ever, they're taking a short-term perspective. Our role is to highlight the huge long term gains of the K&amp;A restoration and to encourage and cajole members and officers to have the same vision that their predecessors did. We also want to lend a helping voice to our fellow volunteer led organisation, the WBCT.</p>	

I hope that might be of some help. I would very much hope that the WSO Partnership will continue.

**FdRP** commented that Local Authorities were in a very difficult position financially so continuing public support for the project was vital to retain any funding. **KO** said that since the last meeting he taken the opportunity to speak to a number of partner organisations to see if they could provide a more proactive support for the canal restoration. **RBI** said that this issue had been discussed within WBCT and perhaps there was scope for a different approach with possibly more than one strand – it was clear there were two or three broad categories of membership of (statutory, commercial etc) and maybe these groups could separately pursue the partnership aims. He was keen that the Partnership continued but also took on a role to actively support WBCT in delivery of the scheme. **SW** noted that there are other partnership models (e.g. for the Pocklington Canal) that may be suitable- it has a core partnership organisation but pulls in other organisations for specific tasks. **LL** would like to see a more detailed briefing for partners to take back to their organisations. He thought it was very important to re-engage with the Local Authorities in Oxfordshire. **FdRP** said that perhaps we should look at the history of the K&A Partnership and there it took a major ‘event’- the HLF restoration- to attract support from a senior level. The economic study for the K&A corridor was significant in attracting the attention of Local Authorities. Perhaps the WSO Partnership needs to think about a similar large scale ‘leap forward’ event. In the meanwhile it is very important that the existing Partnership continues its work. **LL** thought that every success story should be given maximum public exposure. **RY** noted that British Canoeing continued to support the Partnership as they were keen to expand the opportunities for their sport and more canals was directly in alignment with their aims. **KH** thought that WBCT should try to connect with the volunteers of other partner organisations to seek their help. **RBr** said that in dealing with other organisations he noted that when personnel changed very often the ‘successors’ were not fully briefed and therefore were not able or motivated to give the support that had happened previously. **LL** thought that we should be aware of the changing trends in leisure activities and the rise in the popularity of cycling and other ‘health related’ activities should be reflected in the aims of the restoration. **RBI** wondered if some the partnership meetings could be turned into ‘workshop’ events to stimulate interest. He suggested that WBCT could perhaps work on a set of options for discussion at the next meeting to be circulated before the next meeting. **FdRP** agreed this would be a good idea and thanked everyone for a useful discussion.

**RY** wanted to know the process for becoming a partner- **FdRP** said it was by invitation or a direct request to join- the Partnership is run by a non legally binding Memorandum of Understanding.

There was further discussion and **agreement** that a strategy to gain control of all the land for the Wilts & Berks was essential,

**RBr** said he saw parallels with other groups he worked with and a need to get public understanding of the purpose of the partnership.

**FdRP** that getting involved the Visit Wiltshire Great West Way project may be useful as it could potentially attract funding.

**RBI**

8	<p><b>Partners Reports and Issues</b> not covered elsewhere</p> <p><b>WCr</b> said he had recently met Swindon South MP Robert Buckland at Wichelstowe and was going to meet Justin Tomlinson MP (Swindon North) and had asked them for their support for the project. He thought that the partnership should pursue this further. <b>KO</b> said that at a previous meeting with Robert Buckland he had indicated that he would be willing to host a meeting for all the MP's along the route at the House of Commons. It was further suggested that a more active engagement with the Local Enterprise Partnerships would be very useful.</p>	
9	<p><b>Date and time and location of next meeting : 23<sup>rd</sup> March 2017 (revised date) at Wiltshire Council Offices Monkton Park Chippenham</b></p> <p><b>Further Proposed Dates for 2017 :</b> 15<sup>th</sup> June; 21<sup>st</sup> September; 21<sup>st</sup> December</p>	



### Project Summary September to December 2016

<b><u>Melksham Link</u></b> -Canal Planning application	A number of responses received from consultees Still to complete: Wiltshire Council Ecology CRT- expected late Dec EA Wiltshire Wildlife Trust
<b><u>Pewsham Locks Project</u></b>	Project work suspended 'Help for Heroes' team scheduled for spring 2017
<b><u>Dauntsey Lock Visitor Centre project</u></b> (Peterborough Arms )	Work progressing – new toilet operational – first phase works scheduled to be completed by end of December
<b><u>Royal Wootton Bassett</u></b> <b><u>Studley Grange Project</u></b>	All excavations now completed for 2016 – there will be further work to do in the future but the basic canal is completed . Planting programme scheduled for spring 2017. Opening planned for summer 2017
<b><u>Royal Wootton Bassett- Templars Firs Extension</u></b>	First works planned for late Dec 2016
<b><u>Swindon Mouldon Hill</u></b>	No further progress
<b><u>Swindon Wichelstowe</u></b>	-Wichelstowe Link plans on hold awaiting final signing with Swindon BC joint venture partner Barrett (David Wilson) homes. Comments made to SBC on canal profile design. Investigations in progress to see how East Wichel Canal can be kept at proper water level.
<b><u>Swindon Town Centre</u></b>	Awaiting co-operation agreement from SBC
<b><u>Swindon Eastern Villages</u></b>	Submissions made to SBC draft GI plan
<b><u>Land Acquisition</u></b>	First transfer from Wiltshire Council at Morningside Farm RWB in progress. New lease at Challow in progress.



## New Excavations - Studley Grange

