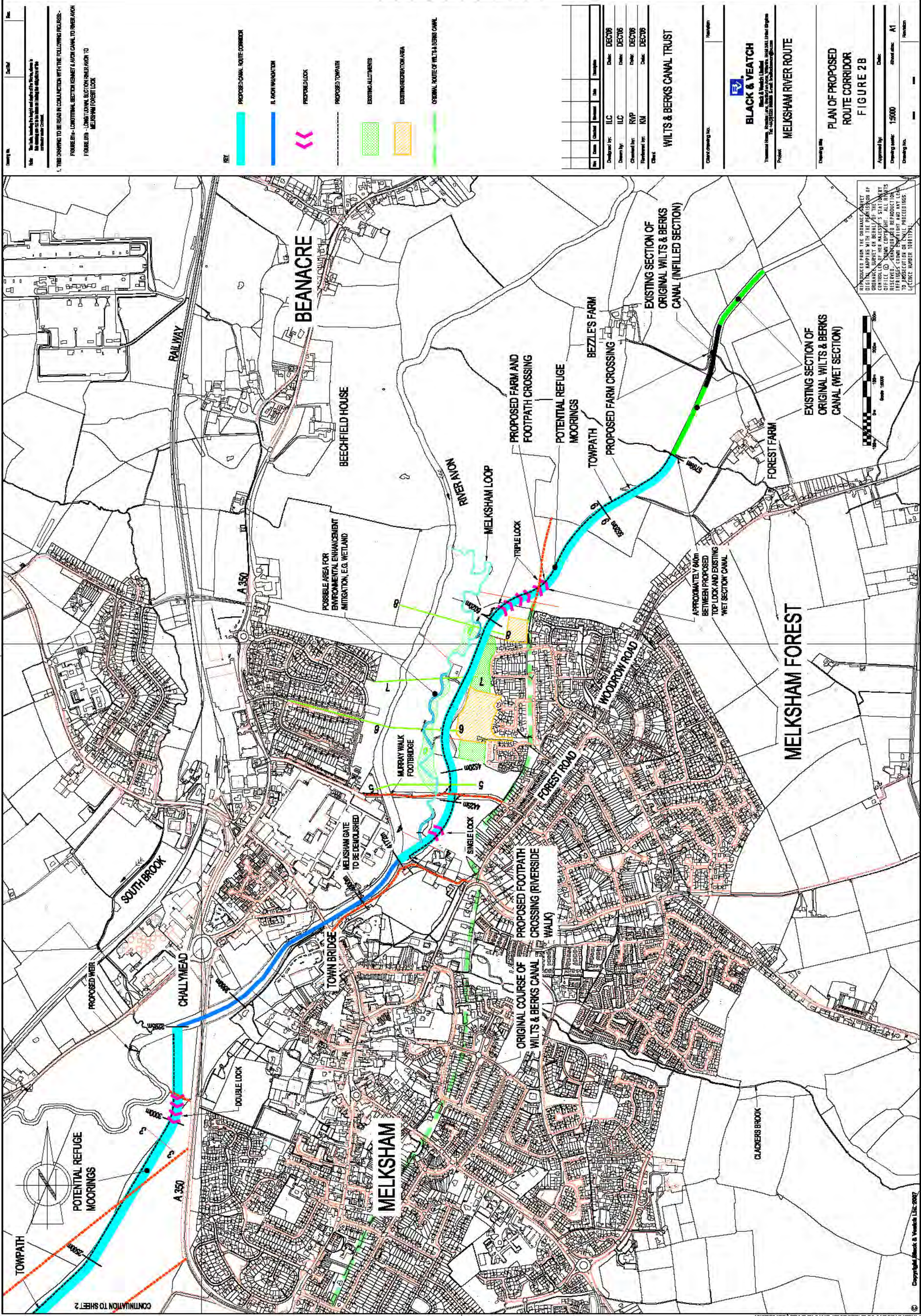
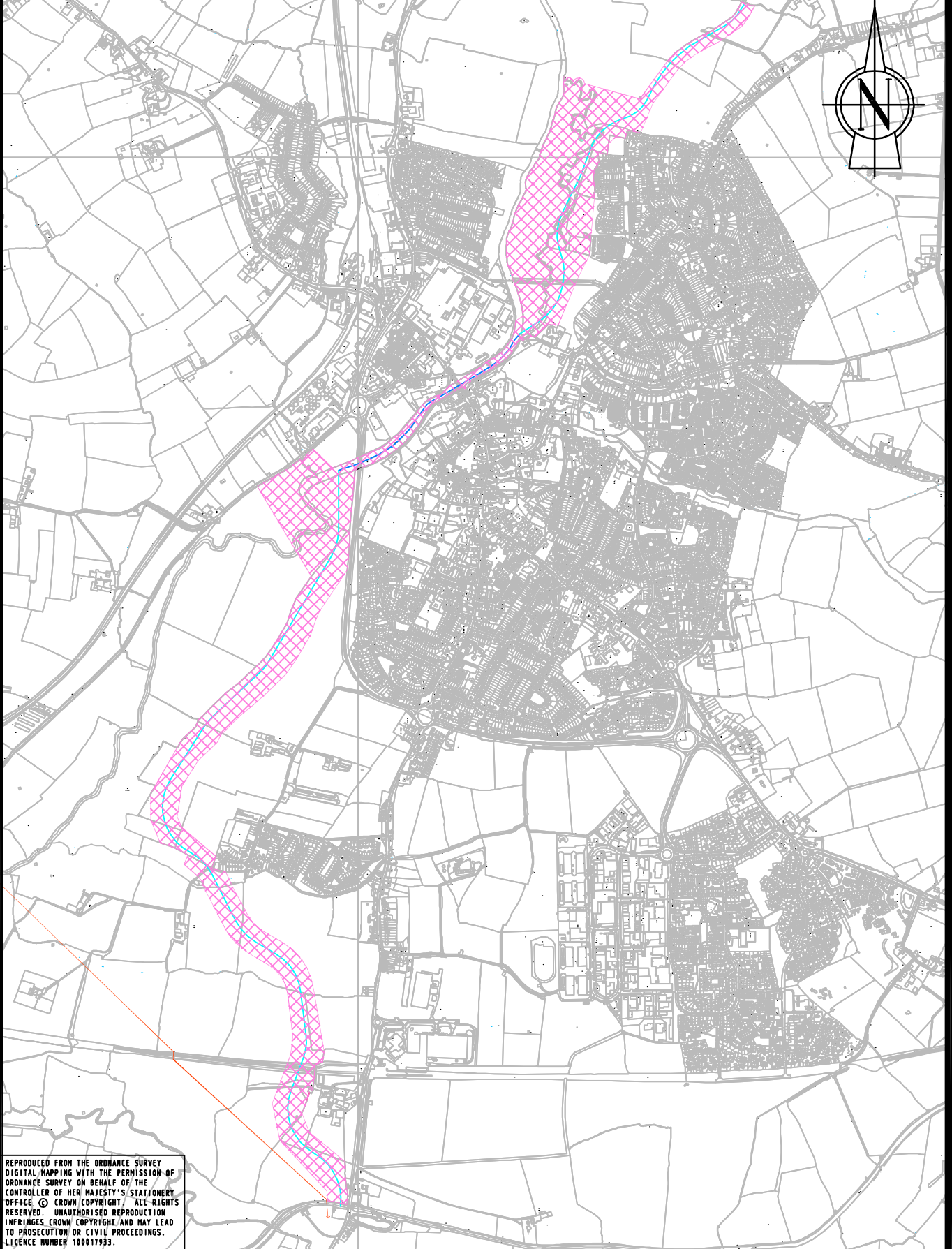


**APPENDIX 3.3 EXTRACT OF WILTS & BERKS CANAL: RIVER ROUTE STUDY,
BY BLACK & VEATCH, 2007**





REPRODUCED FROM THE ORDNANCE SURVEY
DIGITAL MAPPING WITH THE PERMISSION OF
ORDNANCE SURVEY ON BEHALF OF THE
CONTROLLER OF HER MAJESTY'S STATIONERY
OFFICE. © CROWN COPYRIGHT. ALL RIGHTS
RESERVED. UNAUTHORISED REPRODUCTION
INFRINGES CROWN COPYRIGHT AND MAY LEAD
TO PROSECUTION OR CIVIL PROCEEDINGS.
LICENCE NUMBER 100011933.



BLACK & VEATCH

Wilts & Berks Canal Trust

Melksham River Route

**Recommended Corridor to be Considered in the
West Wiltshire Development Framework**

FIGURE 3

08.05.2007

© BVL 2007